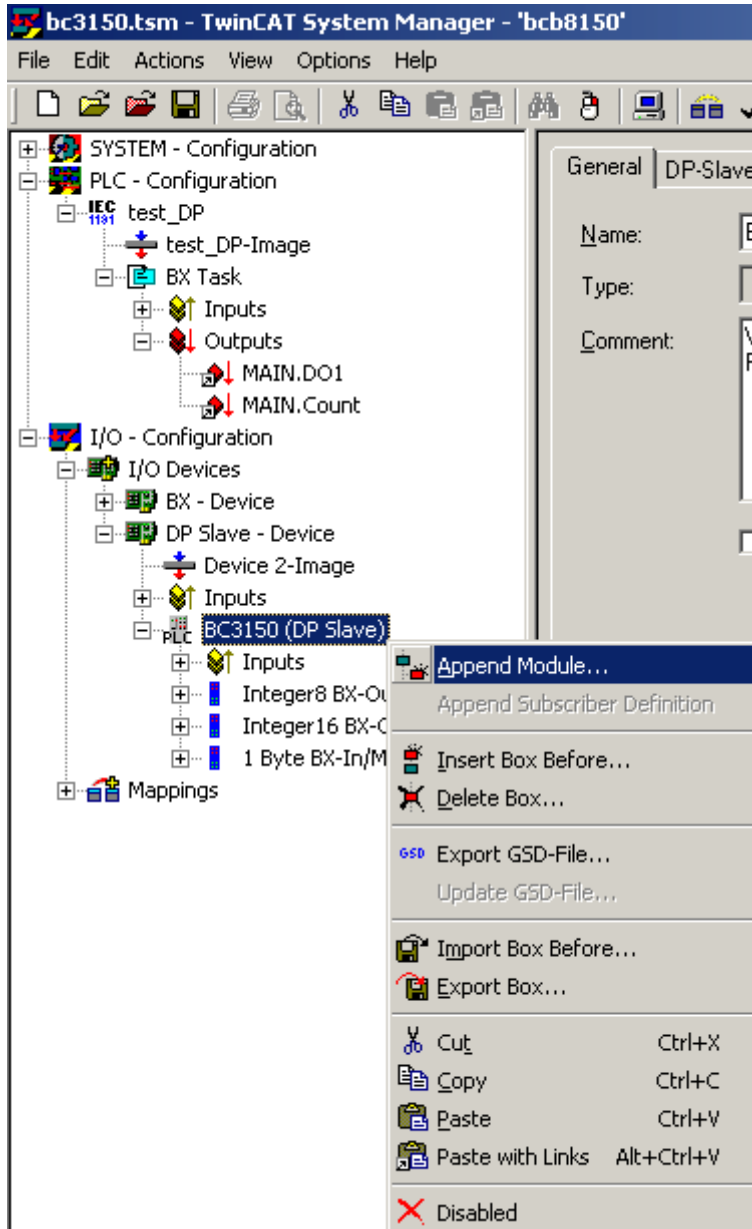


1.

BC3150 (DP Slave)



Profibus).

(Input/Output,

/

2.

## Profibus.

The screenshot displays the TwinCAT System Manager interface for a project named 'bc3150.tsm'. The left sidebar shows a project tree with 'SYSTEM - Configuration' expanded to 'PLC - Configuration', then 'test\_DP', 'test\_DP-Image', 'BX Task', 'Inputs', and 'Outputs'. A red circle highlights 'MAIN.Count' under 'Outputs'. The main window shows the variable configuration for 'MAIN.Count' with the following details:

Variable	Flags	Online
Name:	MAIN.Count	
Type:	INT	
Group:	Outputs	Size: 2.0
Address:	4 (0x4)	User ID: 0
Linked to...	Integer16 BX-Out/Master-In_1_0 . Outputs . Integer16 BX-Out/Master-In . BI	
Comment:	Variable of IEC1131 project "test_DP". Updated with Task "BX Task"	

A red arrow points from the 'Linked to...' field to the 'Attach Variable MAIN.Count (Output)' dialog box. This dialog shows a tree view of the I/O configuration. The path 'I/O - Configuration > I/O Devices > BX - Device > KBus-Interface > Term 4 (KL3022) > Data Out > QB 2050.0, INT16 [2.0]' is highlighted. The 'Integer16 BX-Out/Master-In\_1\_0 > QB 1.0, INT16 [2.0]' variable is selected. The dialog also includes options for 'Show Variables' (Unused, Used and unused, Exclude disabled, Exclude other Devices, Exclude same Image, Show Tooltips), 'Show Variable Types' (Matching Type, Matching Size, All Types, Array Mode), 'Offsets' (Continuous, Show Dialog), and 'Variable Name' (Hand over, Take over). Buttons for 'Cancel' and 'OK' are at the bottom right.

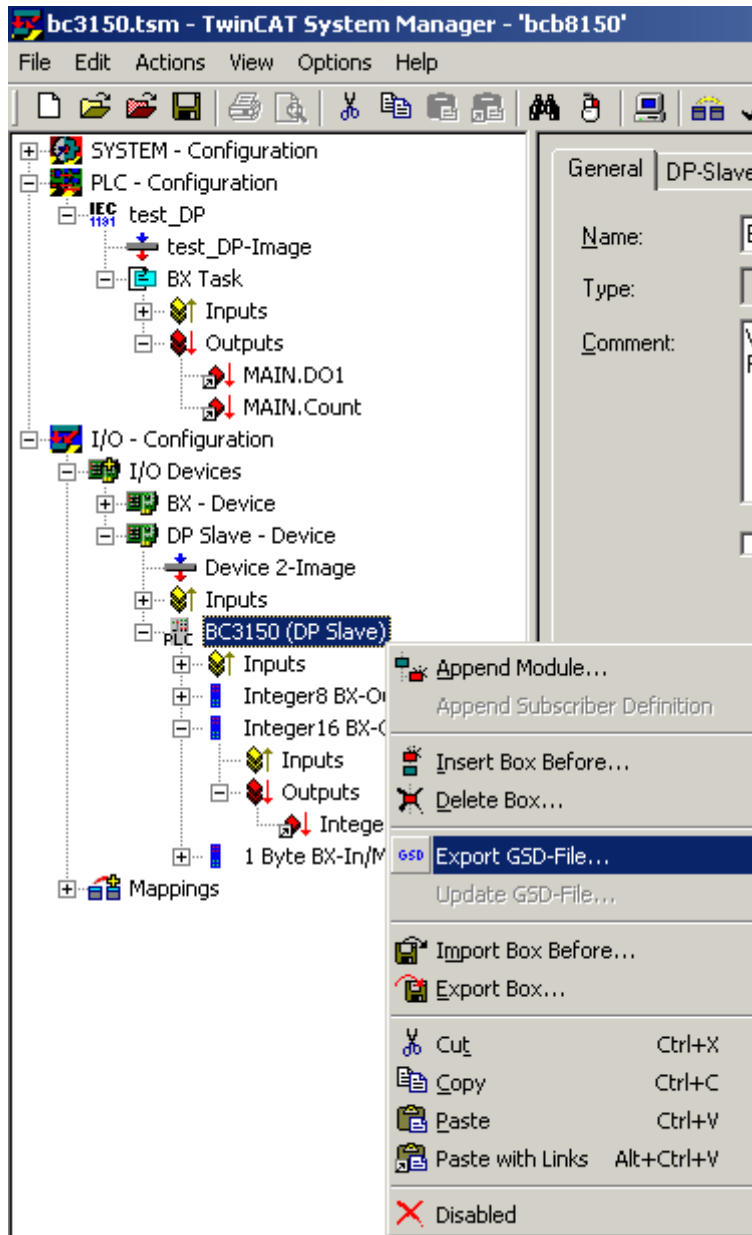
3. GSD (GSE)  
Beckhoff  
TwinCAT

Profibus.  
[WWW.BECKHOFF.COM](http://WWW.BECKHOFF.COM)

BC3150 (\*.tsm) c .

GSD  
DOWNLOAD.  
CX c

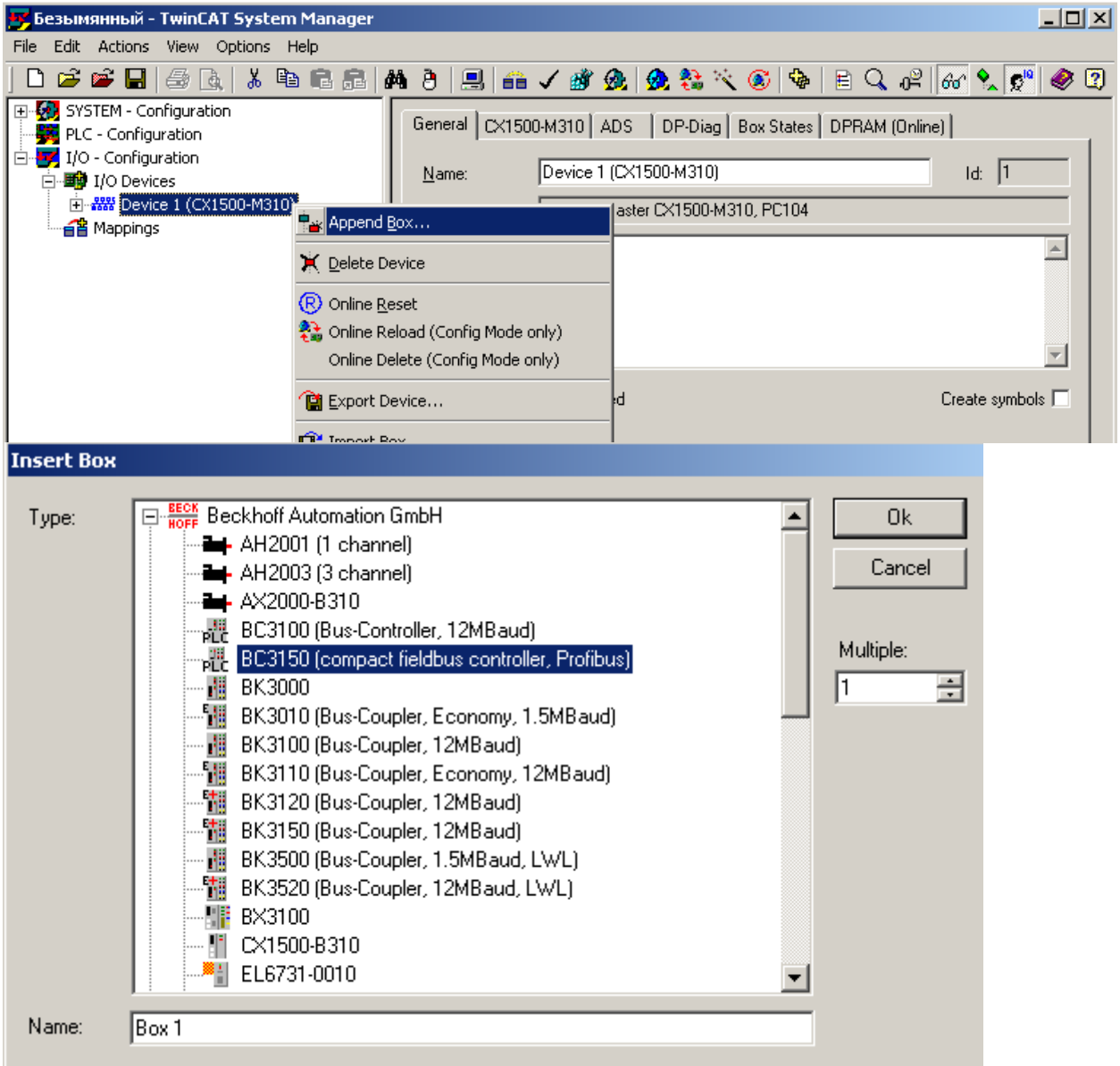
4.



4.

Slave

-



TwinCAT System Manager

